

Today, why not collect a hot tasty meal from your local pub?

**FIND OUR MENUS INSIDE**



Pages  
28-29!!

Call us with your order on  
(01664) 822225

The

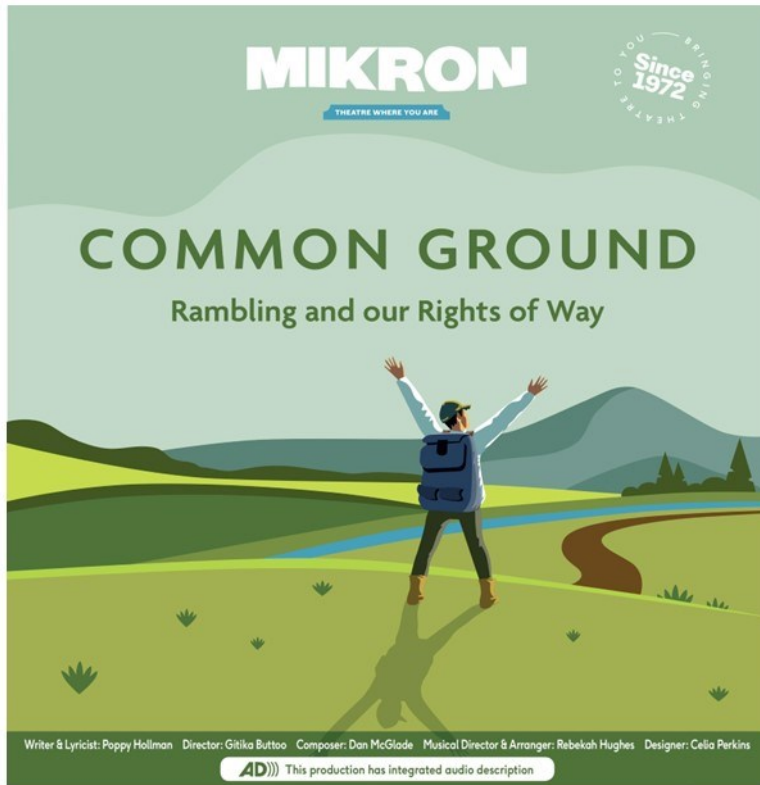
# Hickling Standard

Village Newsletter for  
Hickling and  
Hickling Pastures

Issue 154

June/July 2024





Friday 31st May - 7pm  
**THE PLOUGH PUB & KITCHEN, HICKLING**  
 No reserved seating or tickets required,  
 a 'pay what you feel' collection will be taken after the show  
 01664 822225 or [www.ploughinnhickling.com](http://www.ploughinnhickling.com)  
 Show Champion: Tresillian House



Supported using public funding by  
**ARTS COUNCIL ENGLAND**

**THE CUCKOO'S NEST**  
 PEEL STREET, MARDEN



Funded by  
**UK Government**



Mikron Theatre Company Ltd  
 Reg Charity: 265191

Join Mikron on a 'hill-arious' ramble through the history of land access in England.  
 From ze Norman Conquest to loitering in lockdown, via The Mass Trespass at Kinder Scout.

The Pendale and District Ramblers are looking forward to celebrating 'in stile' on their 50th anniversary walk, but the path has been blocked by the landowner.

How will they find their way through?

Their quest for freedom and fresh air won't be easy, as they navigate bulls, beavers, and wandering sheep.

Grab your boots and waterproof for a meander with Mikron on a hike through history.

This play has integrated audio description.

Touch tours are available – just ask a member of the team when you arrive at a venue.

# Hickling Scarecrows 2024

**SAVE THE DATE: 14th & 15th September**



Theme: Flora and Fauna. As usual we distribute any funds raised between local charities and Emmanuel House Nottingham - a charity supporting homeless people in their recovery.

A little reminder that if you have any unwanted presents or bottles, please take them to Margaret Woolley, The Old Post Office, for the Bottle Stall and Tombola (please check dates). We'd also love sponsorship for attractions, offers of help for everything from car-parking to washing up and Raffle prizes. If you'd like to be on the committee and help with organising please contact Karen Buckley or Barbara McEwen.

Flora & Fauna Ideas list was printed in the last issue but here is a sample to whet the appetite

- The Beatles
- The Zodiac
- HMS Beagle
- Rudolf the Red Nosed Reindeer
- Tigermoth
- Pegasus
- Forrest Gump
- Robin Hood
- Harry Potter and the Order of the Phoenix



# Volunteers needed



Dove Cottage Day Hospice provides services, support and respite care for local families living with life-limiting illnesses. Around 100 families a week rely on the support that we provide, and we couldn't do what we do without our amazing team of volunteers.

We have a fantastic team of hard-working, dedicated volunteers but we are in desperate need for more!

**Do you have a few hours to spare each week?  
Would you like to make a difference to local families?  
Do you want to be part of a fantastic team?**

There are lots of opportunities to get involved with supporting the hospice, however we're currently looking for people to fill the following roles:



Visit [www.dovecottage.org/volunteering](http://www.dovecottage.org/volunteering) or call  
01949 860303 to find out more!

[www.dovecottage.org](http://www.dovecottage.org)

01949 860303

 @dovecottagedayhospice

## To Doreen

We of Hickling Scarecrows, formerly Hickling Ladies, are sad that we must say goodbye to one of our longest serving and most committed ladies. It is a rare and priceless gift to have a champion like Doreen Faulks on the team. She has been organising village events for as long as any of us can remember and raised many many thousands of pounds over the years. She was a stalwart of the Country Fair and later one of the founders of the immensely popular Scarecrow Weekend. For these and other events, she and Ted opened their home and their hearts to the village. She was usually to be found in the kitchen surrounded by helpers and heaps of rolls or cakes as she organised the refreshments teams. Teams usually worked two-four hour stints, Doreen, however, was there all day keeping it all on track with cheerful, unceasing action. She infused the event with a culture of minimal red-tape, light touch organisation and maximum friendliness. We always marvelled at her good natured acceptance of all and sundry walking round the house and taking over the kitchen. The garden too was taken over by marquees or archery or whatever facility we needed. Her dining room, sitting room, fridges were all full of provisions and the bathroom unofficially open to anyone that needed it. She participated enthusiastically in organisational meetings, often being the voice of reason as impatience threatened. Ted was equally enthusiastic, helping out with furniture moving and helping with the teas. He loved the meet and greet role, whilst Doreen held the catering end up out of sight and away from public awareness - the swans feet paddling furiously beneath the serene surface. She had a savvy business side too, happily selling an old teacup when a visitor asked to buy one, and charging even more when he asked for another the next year. She did, of course,



put the money in the charity pot. Of her many other interests and her devotion to her family, we leave to others to testify. We are simply grateful that these events benefitted from that same energy and open heartedness. It is a testament to her that, although we couldn't imagine Scarecrows without her, it has strong enough foundations for others to pick up the baton and carry on in their own way. Thank you Doreen.



# Sensational Summer PRIZE DRAW

Win a family trip via  **eurostar**

(x 4 return tickets to Paris, Bruges or Brussels)

For a full list of all the amazing experiences up for grabs, visit [www.dovecottage.org/win](http://www.dovecottage.org/win)

**TICKETS £1 (£5 PER BOOK)**

GET YOUR TICKETS IN ANY OF OUR DOVE COTTAGE CHARITY SHOPS OR ONLINE AT:  
[WWW.DOVECOTTAGE.ORG/WIN](http://WWW.DOVECOTTAGE.ORG/WIN)

DRAW DATE:  
**Sunday 7th July**

## SAVE THE DATE!

# PAWSOME

### FAMILY FUN DAY & DOG SHOW!



**SUNDAY 7TH JULY 2024**  
**11.00-4.00**

A day full of fun for the whole family!!

Stathers Lodge (opposite the hospice) Canal Lane, LE14 4EX

Follow us for updates and more details

 [@dovecottedayhospice](https://www.facebook.com/dovecottedayhospice)

IN AID OF



## Messages

Please contact us with your **messages** - we look forward to hearing from you.



No **welcome messages** for this issue: but if you have recently moved in to Hickling or Hickling Pastures and we haven't said, 'Hello!', we hope that you are enjoying living in the village and your new neighbours look forward to meeting you.

~~~~~

### Doreen Faulks.

We are very sad to share the news that Doreen has died. Doreen and Ted have been part of the backbone of Hickling for so many years and they have shaped all of the things that make Hickling such a special place to live. They gave to us all generously and with genuine kindness and humour. Our love and thoughts go to Doreen's family and friends.



### We really are looking for a New Editor—we need your HELP!!

After stepping in temporarily following Maggy's retirement from editing the Hickling Standard, we are looking for a volunteer to continue the good work; please contact Jane at [frasermjlk@outlook.com](mailto:frasermjlk@outlook.com)

- The newsletter is collated on Microsoft Publisher at the moment, but that can change
  - Help & support will be given by the team
- Involves a couple of days spread over every two months (6 issues per year)



# VALE ELECTRICS

ELECTRICAL CONTRACTORS

[www.valeelectrics.co.uk](http://www.valeelectrics.co.uk)



# Squirrel Stores

*The biggest "little" shop in the Vale of Belvoir*



**Delivery service now available  
on orders over £20**

(excluding cigarettes and tobacco)

**Contact us on 822315 or call in  
to the shop for more details.**

- Greetings cards
- Artisan jams, chutneys, honey etc
- Newspapers and magazines
- Wines, beers, local ales and ciders
- Freshly baked Hambleton bread and produce delivered daily
- Selection of butcher's meat produce and Melton Mowbray pork pies
- Local cheeses
- Large variety of fresh fruit and vegetables (personal weekly fruit delivery and veg boxes available)
- Dry cleaning service
- Refill station
- Fresh sandwiches, sausage rolls, samosas etc

*Opening hours:*

*Monday to Saturday 7am to 7pm*

*Sunday and Bank Holidays 8am to 1pm*

*01664 822315*

*The Sands, Long Clawson*

**Vale of Belvoir Branch  
Royal British Legion**



## **D-Day 80 Remembrance**

The RBL will be hosting a service of Remembrance on 6 June at 2pm at the National Memorial Arboretum, Alrewas, to commemorate the 80 years since the iconic D-Day landings. There is to be an exhibition to honour the service and sacrifice of the D-Day generation both in Alrewas and at the site of the British Normandy Memorial in France. Normandy veterans, families of the fallen and descendants of the veterans have been invited.

In Nottingham on Tuesday 11 June, there will be an Evening Sunset Parade and Open-Air Service at the Victoria Embankment. This will take place from 6pm. Medals and Decorations may be worn.

## **Armed Forces Weekend at Wollaton Park**

This annual event is to celebrate and honour our Armed Forces. It will take place as usual at Wollaton Park on Saturday and Sunday, June 27 and 28. Activities are free, opening at 10am and closing at 4pm. Car Parking will cost £5. The event will be opened by The Band of the Royal Air Force College. It will be a great day out in Nottingham for everyone, young and old.

There will be a programme of events, displays and re-enactments including:

Wartime Music Show, with Military Wives at 11.30am on Saturday

508 Parachute Regiment Re-enactment Camp

1940s Canteen

Fairground

Army Beer Tent

Forces Equipment

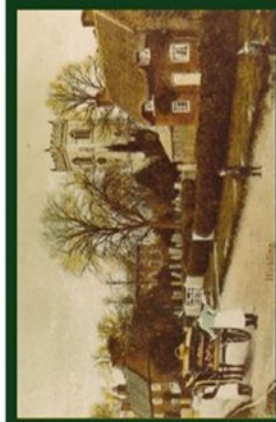
Douglas DC-4 Dakota flypast on Saturday and Sunday

*Michael Chapman*



Local History Group  
**Hickling**  
Nottinghamshire

[www.hicklingnottslocalhistory.com](http://www.hicklingnottslocalhistory.com)



# Are You Interested in Local History?

~~~  
Research  
Transcribing  
Recording memories  
Events

~~~  
Old photographs  
House Deeds  
Family records  
Businesses/Clubs/Societies

~~~  
We are looking for all kinds of involvement.

Please contact us:  
if you would like to be involved in the local history group or  
if you have any projects that you would like to work on or  
if you have material that we could add to our collections.

~~~  
[info@hicklingnottslocalhistory.com](mailto:info@hicklingnottslocalhistory.com)  
Facebook  
Speak to: Carol Beadle, Gill Bloor,  
Pauline Chell, Jane Fraser.

## JUMBLE SALE

Saturday 22nd June 2024 2pm

Hickling Village Hall

Toys, Books, Shoes, Bric-a-Brac, Textiles, Raffle, Cakes, Refreshments

(All donations gratefully accepted, from 6pm Friday and 9am Saturday, but please, no soiled clothing or bulky furniture)

Admission £1

Proceeds shared between Diabetes UK and Alzheimer's Society .

Organiser: Alan Thomas 07585 132303

### The Pleasures of an Allotment

Why do people want an allotment, you may ask? Haven't we all got enough to do? But in our stressed, gadget-driven world maybe we prioritise the wrong things. Yes, allotments involve physical activity but they are:

- Great for keeping us fit. Fresh, pesticide-free fruit and vegetables. Yum – we all need more of those. Cheaper than the gym for improving muscle strength and flexibility.
- Great for boosting mental health. It's official. It's even being prescribed by the NHS! Fresh air, exercise and contact with the natural world all reduce stress and boost mental well-being.
- Great for kids. Making mud pies, eating peas straight from the pod, growing monster pumpkins, watching a sunflower reach for the sky – all while learning where food really comes from. What's not to like?
- Great for wildlife watching. Early morning or the long summer evenings are the best times to spot our hares, deer, rabbits, voles, foxes or various birds which hunt or nest on the site. (You may have to protect the fruits of your labour from some of these!)
- Great for socialising. There is nearly always someone else there. Make new friends, share surplus produce, ask advice about pruning, growing sweet peas or whatever. People are always ready to take a break and chat.
- Great for the planet. Ok, we can't grow bananas or oranges in Kinoulton, but do we really need green beans from Peru or flowers cultivated in Kenya? Think of the air miles. There is a price for enjoying strawberries at Christmas and it may well be paid by our children and grandchildren.

If you want to give allotmenting a go, little and often is the key to success. You can't transform a plot overnight. But if you can organize time to walk the dog daily, you can probably make space for an hour or two a week.

Contact [rita@chez-piper.net](mailto:rita@chez-piper.net) for more details.






📍 The Basin, Main St, Hickling  
Melton Mowbray, LE14 3AH  
☎ 01664 820448  
✉ relax@theoldwharf.co.uk  
🖱 www.theoldwharf.co.uk

*Time to relax and unwind*

TEAROOM OPEN SEVEN DAYS A WEEK FROM 9.00 AM - 4.00PM

Please note the kitchen closes at 3.15pm and last drinks orders are at 3.45pm



 Find us on Facebook

## Local History Group



### Email contact list:

• general news and updates

• about projects that we are working on.

To join the mailing list, please send your name and details to us at:

• info@hicklingnottlocalhistory.com

### Gatherings at the Plough Inn.

• Drop in, bring things, talk about all-things-Hickling!

• Next date: October (to be confirmed)

## Headmaster's log book: 1876-1897

*(one of our volunteers is currently transcribing the logbook which is full of the most fascinating snapshots of village life—in the meantime, a short extract)*

**June 21 1877:** closed the school till Monday owing to its being Hickling Club tomorrow.

**July 10:** Haymaking is keeping a few of the larger boys from school.

**July 11:** One of the infants has been putting bits of gravel down the pump I have, with some difficulty, got it out. I fear things will often be put down unless the pump is protected in some way.

**July 26:** The attendance this week is very much down. This morning there are 76 present and properly there should 96 at least. The Haymaking may have something to do with it.

**July 27:** The gallery in the infant room is not regularly dusted. I must speak about it.

## Luna Counselling & Psychotherapy

- **Pluralistic Counselling and Psychotherapy** including CBT, Person-Centred, Psychodynamic, Play Therapy and Gestalt.
- **Face to face, online** and via telephone.
- Based in **Cotgrave**, Nottingham.
- Ages **children to older adults**.
- Accredited Member of the **National Counselling Society** and on their **Children & Young People register**.
- **Fully insured, level 5 trained** and holds **enhanced DBS certificate**.
- Low mood and **depression, anxiety**, intrusive thoughts, **OCD, bereavement** and grief, **anger** and frustration, **phobias, relationship issues**, **lifework, motivation, self-defeating behaviours**.

Ellie Meakin

Ellie@LunaCounselling.co.uk

07444 529 521

\*Please contact for prices\*

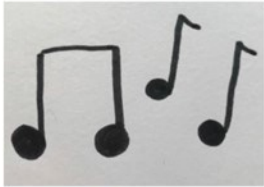


July 2 Owing to the non arrival of New Registers the attendances are marked in the old ones to be copied into the new ones when they come

5 Received the New Registers from Mr Featherstone.

10 Haymaking is keeping a few of the larger boys from school.

11 One of the infants has been putting bits of gravel down the pump I have, with much difficulty, got it out. I fear things will often be put down unless the pump is protected in some way.



Music



Sign



Storytime

A fun music and story group for babies and preschoolers supported by Makaton signing.

Mondays 10-11am during term time

St Luke's church, Kinoulton.

£3 per family group per session.

for more information send Cate a message

at [musicsignstorytime@gmail.com](mailto:musicsignstorytime@gmail.com) or 07886169691



### Belvoir Angel Headstones

Belvoir Angels are a particularly distinctive style of headstone found just in our area. They are carved from Swithland slate and they all date from the late 1600s to the mid-1700s; each one is different but they are also distinctive in style and easily recognisable. Falling into a tradition of naïve or folk art, some of the faces are really quite grim but completely beguiling and the epitaphs are often rather blunt; for example, the headstone in old Dalby that describes the murder of a pub customer who failed to pay his bill - it is said the ha'penny that he was short was fixed into the headstone—the coin is long gone but the circle where it was placed remains.

Approximately, 300 of these headstones have survived and work by local researchers has produced a map showing all of their locations:

- Email [info@hicklingnottslcalhistory.com](mailto:info@hicklingnottslcalhistory.com) for a copy or search the Belvoir Angels Facebook group (£1 for an A3 map and information sheet).

### Belvoir Angels Weekend: 18th/19th May

A series of events and activities over this weekend in May was the first step in what we hope will evolve into more research and more events to celebrate this wonderful heritage:

[www.hicklingnottslcalhistory.com/belvoir-angels-weekend-18th-19th-may-2024/](http://www.hicklingnottslcalhistory.com/belvoir-angels-weekend-18th-19th-may-2024/)

### Would you like to know more?

#### Are you interested in joining a Belvoir Angels Society?

During a lively discussion event on Sunday 19th May (with cake!) it was decided that we should pursue the idea of establishing a Belvoir Angels Society:

What have we learned from the past?

What can we do in the present?

What could we do in the future?

We will be setting up a direct email address shortly; in the meantime, you can contact us at [info@hicklingnottslcalhistory.com](mailto:info@hicklingnottslcalhistory.com) or via the Belvoir Angels FB group. There's no pressure—just a shared interest & curious minds!!

### Table Tennis at the Village Hall!

Monday nights 8 – 10pm

It's been a great season for Village Table Tennis. There have been lots of new friendly faces and so much enthusiasm that we extended our season beyond the Easter break for the first time. Our ethos of 'simply social' is at the heart of our sessions which offer a friendly knock about or a more intensive game and, of course, the chance to socialise.

We'll be taking a break for the summer and will return to the Village Hall on Monday 11 September at 8pm.

For more information call Alison 822761, or Dave 820262.

- Whether your preference is to have a friendly knock-about, or to seek the challenge of an intensive game, our flexible sessions are perfect for you
- Our season runs through the winter from late September to Easter, with a festive break
- Cosy village hall venue with superb facilities and tables for full match play standard
- Comprehensive set up to and quality equipment provided according to ability
- Enjoyable all round exercise in an exceptionally friendly environment, whatever your experience and ability
- Tea and biscuits included, providing an opportunity to relax and socialise

SIMPLY CALL 01664 822761 or 01664 820262 FOR AN INFORMATIVE CHAT

*Try our outdoor table at the Wharf in Hickling.  
Bats and balls available from The Old Wharf Tearooms*





# A.R. PEET LTD

EST. 1979



Specialist retailer of  
WOOD, GAS, ELECTRIC &  
MULTIFUEL STOVES

01664 822397

[www.arpeetstoves.co.uk](http://www.arpeetstoves.co.uk)

[info@arpeetstoves.co.uk](mailto:info@arpeetstoves.co.uk)

## Hickling Village Hall Strictly Why Not Dance?

At Hickling Village Hall  
Main Street, Hickling, LE14 3AQ  
**Thursdays - 4pm to 6 ish.**

Ballroom, Latin. An hour with instructor and time to practice afterwards.  
£15 per couple - come and try some new moves.

Exercise the mind and the body and reward yourself with a cup of tea and some homemade cake.  
Couples only at the moment.  
No Booking required.



## Hickling Local History Group



St. Luke's, Hickling  
The Churchyard  
By Carol Beadle



St. Luke's, Hickling:  
The Churchyard  
By  
Carol Beadle  
£4.50

Available from Pauline  
Chell 01664 822845  
or email:  
[info@hicklingnottlocalhistory.com](mailto:info@hicklingnottlocalhistory.com)



## Did you see the Northern Lights over Hickling on May 10th?

**(BBC)** The Northern Lights - or aurora borealis - appear as bright, swirling curtains of lights in the night sky and range in colour from green to pink and scarlet. The Southern Lights - aurora australis - are seen in latitudes near the South Pole. The lowest part of an aurora is typically 50 miles (80 km) above the Earth's surface. The highest part could be 150 miles (800km) above the Earth.

Both the Northern and Southern Lights are caused by charged particles from the sun hitting gases in the Earth's atmosphere. They occur around the North Pole when the solar wind carrying the particles interacts with the Earth's magnetic field. The most impressive auroras occur when the Sun emits really large clouds of particles called "coronal mass

ejections". "Picture this as a big sneeze by the Sun," says Dr Affelia Wibisono, from the Royal Observatory in Greenwich. "It can contain up to a million tonnes of charged particles."

The Northern Lights have been seen all across the UK in spring 2024. This is thanks to the biggest geomagnetic storm since 2003, according to Sean Elvidge, a professor in space environment at the University of Birmingham. The 2024 storm has been so powerful that, as well as lighting up the night sky, it interfered with satellites and power grids around the world.

**Red:** Excited atomic oxygen at high altitudes (above 150 miles)  
**Green:** Excited atomic oxygen lower altitudes (up to 150 miles)  
**Purple:** Ionized molecular nitrogen (above 60 miles)  
**Blue:** Below 60 miles.

[www.bbc.co.uk/news/science-environment-26381685](http://www.bbc.co.uk/news/science-environment-26381685)



©Alan Napier - view in colour online



## NEWS FROM HICKLING W.I. –

### WITH MEMBERS FROM HICKLING, LONG CLAWSON, NETHER BROUGHTON, UPPER BROUGHTON & BEYOND

The membership of Hickling WI continues to rise and new members are always made welcome. Membership costs just £30 per year – if interested in joining our group please text your details to 07983 406695. and someone will contact you

The Hickling WI presented another cheque at their recent fashion show to the charity, Blood Bikes; which the WI has raised funds for during the last year.

We were delighted to be asked to make all the cakes/desserts for Doreen Faulk's wake after her recent funeral. Doreen had been part of the Hickling and wider community for many years and will be sadly missed by her fellow members of the WI.

When Hickling reached 70yrs of age, a Black Native Poplar tree was planted in Hickling Cemetery to commemorate this anniversary. This species of tree is one of Britain's most endangered trees. There is more information about this tree in the guidebook to Hickling Churchyard available from Hickling History Group. Our original tree was accidentally cut down by groundsmen and the Hickling Parish Council have now provided a replacement. The WI have a 'watering & care' rota in place to ensure this tree thrives.

In the forthcoming weeks, there is lots planned and most events are open to non-members so please join us.

**DARTS** – Tuesday evening at 7.30pm on 4th June, 2 July and 6th August at the NEVILLE ARMS, KINOULTON. A fun evening with the game of darts not being taken too seriously. Contact Liz Vear for further details [lizvear@outlook.com](mailto:lizvear@outlook.com)

**THURSDAY 20 JUNE** There is a morning tour of Brinvale Wild Bird Feed Company followed by an optional lunch

**THURSDAY 27 JUNE** – A trip to Flora Media for a tour, flower arranging & lunch

**THURSDAY 11 JULY 10am** Dog Racing at Colwick – a free event – for more information contact Carol – [carolbeadle49@gmail.com](mailto:carolbeadle49@gmail.com)

**THURSDAY 18 JULY 4.30** our Summer Garden Party

**SATURDAY 10 AUGUST** – a coach trip to the 50's & 60's event at the Crich Tramway Museum. Music, entertainment and lots to do and see during the day. Contact Pauline Chell for more information and to book 01664 822835



## Hickling W.I.

Have you ever thought of joining Hickling W.I.? As a friendly and active group we meet at Hickling Village Hall every 3rd Thursday in the month & we're always looking for new members.

We arrange trips/visits in between our monthly meetings so why not pop along to a meeting or Pauline Chell 01664 822835 for further information.

By the way we don't sing Jerusalem or make jam.

**Hopefully see you soon**

**From the Hickling W.I. committee**



## HICKLING W.I.'s CHARITY FOR THE FORTHCOMING YEAR – '1000 BOOK CHALLENGE'

Hickling WI has members from Hickling, Long Clawson, Nether Broughton, Upper Broughton and beyond.

Hickling WI has chosen the local charity, 'Music for Everyone' to support for the forthcoming year.

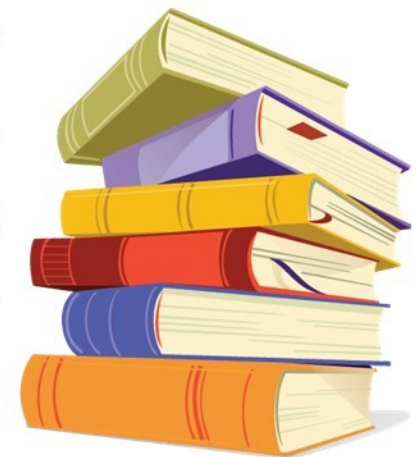
This charity was formed in 1983 by Angela Kay, initially to promote singing for people from all walks of life and abilities. Since then it has developed to encompass instrumental as well as choral activities including supporting local schools to develop educational music programmes

A large amount of the funding for this charity is generated from their bookshops. 'Music for Everyone' has 3 x 2nd hand bookshops called Bookwise; one in Hockley, Nottingham, one in Southwell and one in Newark. They are open 6 days a week from 10am until 4pm and sell donated nearly new books. They also sell greeting cards, sheet music etc and really are an Aladin's cave for those who enjoy reading.

**The Hickling WI will be supporting this charity by doing a '1000 BOOK CHALLENGE'.**

**During the next few months, the Hickling WI will be collecting books [in good condition] to donate to Bookwise for them to sell in their shops.**

If you would like to give any books for our challenge, please deliver them to Pauline Chell in Hickling Tele 01664 822835 or let any WI member have them. The books can be fiction or non fiction and Children's Books are welcome too. The first consignment of 100 books is being delivered in early May with batches of 100 books being delivered regularly thereafter.



# LADY FRIDAY Are you short of TIME?

I could support you when you're working or on holiday

## PETS

Regular or occasional dog walking & pet care at your home

## CHILDREN & ELDERLY RELATIVES

Meet children from school or take them to their recreational activities\*

Accompany elderly relatives to appointments or shopping, or whatever

## HOME

Water plants, take mail in & generally check all is well

Do not hesitate to ask - I am mature and versatile!

References available on request, Inc DBS\*

Angela Sallis, 6 Melton Road, Long Clawson, LE14 4NR

01664 822597 [angela\\_sallis@btinternet.com](mailto:angela_sallis@btinternet.com)

# Belvoir Foot Health Clinic



DipCFHP



MPSPract



MPS5909

07714876006

[belvoirfothealthclinic.co.uk](http://belvoirfothealthclinic.co.uk)

Suite G, Cotgrave Business Hub, Candleby Lane, Cotgrave, Nottinghamshire, NG12 3US.

HICKLING WI HAS ORGANISED A TRIP

## A DAY IN STAMFORD

FRIDAY 27<sup>TH</sup> SEPTEMBER 2024

A coach will take us to Historic Stamford on Market Day, where we will have time to explore all that Stamford has to offer – churches, museums, individual shops, The George Hotel etc.

On the way home we will stop at Gates Nursery

The coach will pick up at 8.25 at the Nevile Arms, Kinoulton

At 8.30 at the end of Bridegate Lane, Hickling

At 8.40 at the Tap and Run in Upper Broughton

Please book by contacting **Pauline Chell** on 01664 822835

£20 per person

HICKLING WI HAS ORGANISED A TRIP TO

## THE CRICH TRAMWAY MUSEUM

50's & 60's FESTIVAL

SATURDAY 10TH AUGUST 2024



A full day of festival activities including live music and entertainment.

Book early to ensure a place.

The coach will pick up at 8.25 at the Neville Arms in Kinoulton.

At 8.30 at the end of Bridegate Lane, Hickling.

At 9am on Wollaton Road – end of Grangewood Road, Wollaton.

Will be leaving for home about 5pm.

Please book by contacting **Pauline Chell** on 01664 822835.

## Letter from St Luke's

Dear parishioners,

The recent plant fair at Upper Broughton church made me think of the changes in the way churches have been used over the centuries. Originally the churches were open, without the sea of pews with which many churches have to contend at the present time. Occasionally there is the opportunity to see a pew-free church as it had been nearer the time when it was built – Thaxted Essex is a particularly good example. The appearance is changed considerably. It raises the issue of how churches were used, and it may be concluded that in former times they were used much more freely for the community.

The church is a community based on and directed by the love of God, and though meeting together for worship brings us together in God's presence for a time of listening and reflection, but what we learn must be shared with those around us. It might be argued that filing into a church, sitting in rows and then filing out again deprives us of the fellowship which ought to be a mark of a Christian community. In recent years each of our churches has fought back against the constraints which the church layout bequeathed by post-reformation generations has imposed on us. We now have kitchens and toilets together with pew-free areas where we can gather as a community, usually to enjoy tea, coffee and very good cakes.

The church is also there to be something beautiful for Christ, not just any utilitarian structure which keeps the weather off the assembled company. What we attempt to offer is our very best in design, words and music as a response to what God has done for us. God's love is liberating rather than constraining, and so should our churches and people be as a reflection of this.

Best wishes

Robert C Jones

St Luke's, Broughton Sulney (Upper Broughton)

### St. Luke's Church - Dates for the Diary:

June 28th: Lisa & Paul—a Night at the Musicals 7.30pm

Scarecrow Weekend—look out for refreshments & stalls!!

October: Peter Liddle speaking about our Viking history—details tbc

## Services at St Luke's Churches in June and July 2024

| Date   | Kinoulton |                | Hickling |                | Upper Broughton |                |
|--------|-----------|----------------|----------|----------------|-----------------|----------------|
|        | Time      | Service        | Time     | Service        | Time            | Service        |
| 2 Jun  | 9:00 am   | Holy Communion | 6:30 pm  | Evening Prayer | 10:00 am        | Morning Prayer |
| 9 Jun  | 11:00 am  | Morning Prayer | 9:00 am  | Holy Communion | 10:00 am        | Morning Prayer |
| 16 Jun | 11:00 am  | Morning Prayer | 10:00 am | Morning Prayer | 9:00 am         | Holy Communion |
| 23 Jun | 11:00 am  | Morning Prayer | 6:30 pm  | Holy Communion | 10:00 am        | Morning Prayer |
| 30 Jun | 10:00 am  | Holy Communion |          |                |                 |                |
| 7 Jul  | 9:00 am   | Holy Communion | 6:30 pm  | Evening Prayer | 10:00 am        | Morning Prayer |
| 14 Jul | 11:00 am  | Morning Prayer | 9:00 am  | Holy Communion | 10:00 am        | Morning Prayer |
| 21 Jul | 11:00 am  | Morning Prayer | 10:00 am | Morning Prayer | 9:00 am         | Holy Communion |
| 28 Jul | 11:00 am  | Morning Prayer | 6:30 pm  | Holy Communion | 10:00 am        | Morning Prayer |
| 4 Aug  | 9:00 am   | Holy Communion | 6:30 pm  | Evening Prayer | 10:00 am        | Morning Prayer |

### Ministry Team:

Priest in charge: Revd Paul Massey (Rector of Cotgrave):  
Email: rector@allsaintscotgrave.co.uk Tel. 01159 892223

Lay Ministers:

|                                                                                                                                                                                                                                                                                                                                                                                                                                                                                                 |                                                                                    |
|-------------------------------------------------------------------------------------------------------------------------------------------------------------------------------------------------------------------------------------------------------------------------------------------------------------------------------------------------------------------------------------------------------------------------------------------------------------------------------------------------|------------------------------------------------------------------------------------|
| <h1>STEVEN M. DAW</h1> <h2>PLUMBING, HEATING and GAS SERVICES</h2> <p>Plumbing work – repairs; Central heating and boiler installations; Boiler servicing; Central heating power flushing; Bathroom design and installation</p> <p>Over 30 years experience<br/>Based in the Vale of Belvoir</p> <p>Tel: 01664 822648 - Mobile: 07860 285031<br/>Email: <a href="mailto:stevendaw@btinternet.com">stevendaw@btinternet.com</a><br/><a href="http://www.stevendaw.com">www.stevendaw.com</a></p> |  |
|                                                                                                                                                                                                                                                                                                                                                                                                                                                                                                 |  |

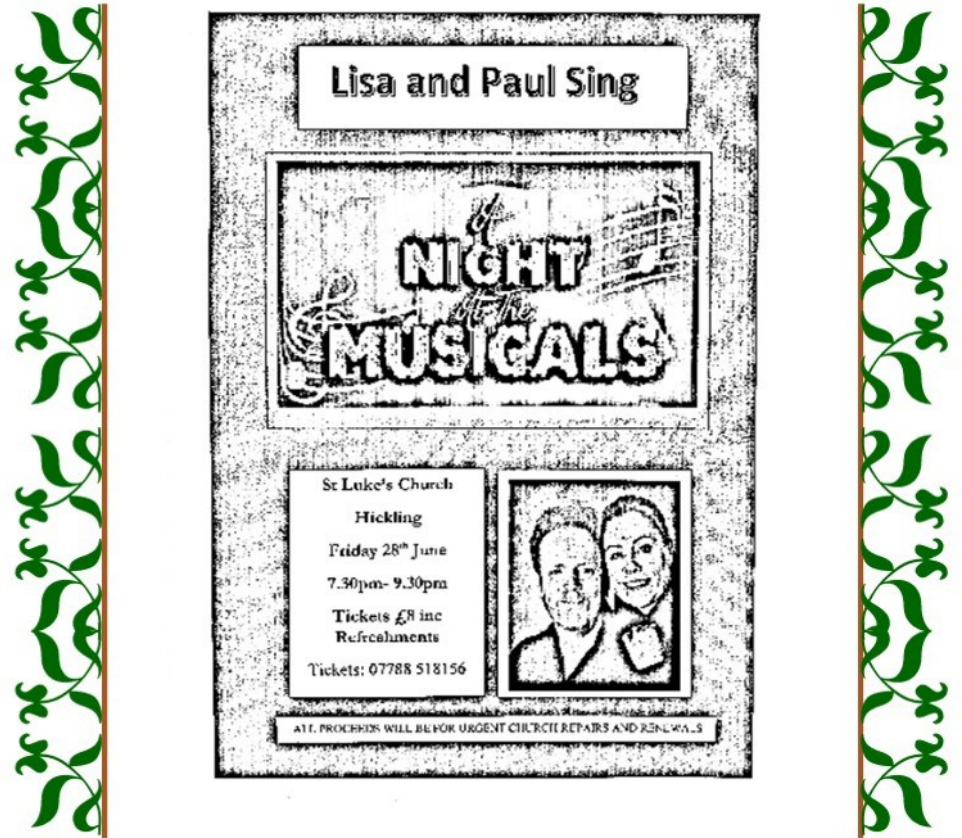
We are located in Hickling Village Hall  
Monday – Friday 9.15am-3.15pm during term time. You can visit our website [hicklingpreschool.co.uk](http://hicklingpreschool.co.uk) for more information on how to get involved or how to register your child.



**HICKLING**  
pre-school

Est. 1967. Celebrating 50 years!

[hicklingpreschool.co.uk](http://hicklingpreschool.co.uk)  
Grow. Explore. Discover.



**Lisa and Paul Sing**

**NIGHT**  
at the  
**MUSICALS**

St Luke's Church  
Hickling  
Friday 28<sup>th</sup> June  
7.30pm- 9.30pm  
Tickets £8 inc  
Refreshments  
Tickets: 07788 518156

ALL PROCEEDS WILL BE FOR URGENT CHURCH REPAIRS AND RENOVATIONS



**Weekly Coffee Mornings**  
**on Thursdays from 10.30am.**

Come and meet your friends, enjoy homemade cakes etc. and a warm welcome. No set charge, just a voluntary donation if you can.

**This is your Village Church.**  
If you would like to support it in any way please contact:  
Alex Thomas at [alex28thomas@btinternet.com](mailto:alex28thomas@btinternet.com)  
**Could you offer a cake occasionally? Help with cleaning twice a year by rota? Help at events etc?**

# Sudoku No 14931 Difficult

©Times 220524

|   |   |   |   |   |   |   |   |   |
|---|---|---|---|---|---|---|---|---|
|   |   |   | 2 |   |   |   |   |   |
|   | 2 |   |   | 8 | 3 |   | 6 |   |
| 4 |   |   | 1 |   |   |   | 7 |   |
| 3 |   |   | 4 |   |   | 2 |   |   |
|   | 6 |   | 8 |   |   |   | 3 |   |
| 1 |   |   | 7 |   |   | 8 |   |   |
| 7 |   |   | 5 |   |   |   | 4 |   |
|   |   | 6 |   |   | 4 | 7 |   | 9 |
|   |   |   |   | 7 |   |   |   |   |

## Foxes and Chickens

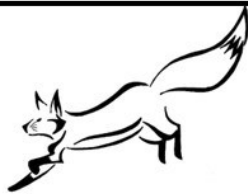
Lots of households in the village keep chickens but recently some have been taken by foxes.

In 2022 we published a lengthy article discussing fox behaviours; they are wild animals and they prefer to avoid humans and, by choice, they stay away from us.

Please be aware that your behaviour can change the behaviour of wild foxes: if you put out food for them, they become comfortable in human spaces, they associate humans with food and they become much more likely to prey on domestic fowl.

**Please do not put food out for foxes:  
it isn't good for them and it isn't good for us!**

(Hickling Standard issue 143/AugSept 2022)



## Moonlight, Summer Moonlight by Emily Jane Brontë

'Tis moonlight, summer moonlight,  
All soft and still and fair;  
The solemn hour of midnight  
Breathes sweet thoughts everywhere,

But most where trees are sending  
Their breezy boughs on high,  
Or stooping low are lending  
A shelter from the sky.

And there in those wild bowers  
A lovely form is laid;  
Green grass and dew-steeped flowers  
Wave gently round her head.

## Apples by Laurie Lee

Behold the apples' rounded worlds:  
juice-green of July rain,  
the black polestar of flowers,  
the rind mapped with its crimson stain.

The russet, crab and cottage red  
burn to the sun's hot brass,  
then drop like sweat from every  
branch  
and bubble in the grass.  
They lie as wanton as they fall,  
and where they fall and break,  
the stallion clamps his crunching jaws,  
the starling stabs his beak.  
In each plump gourd the cidery bite  
of boys' teeth tears the skin;  
the waltzing wasp consumes his  
share,  
the bent worm enters in.  
I, with as easy hunger, take  
entire my season's dole;  
welcome the ripe, the sweet, the  
sour,  
the hollow and the whole.

## Love Song, 31st July by Richard Osmond

Today the queen ant and her lovers  
took their nuptial flight, scattering  
upwards like a handful of cracked  
black peppercorns thrown in the face  
of a bear, the bear being in this case  
a simile for the population of Lewisham  
and Hither Green.

There is an increasingly common assertion  
online that the winged of every ant nest  
in Britain take off on the same bright  
morning. This says less about ants than it  
does

about the state of media in which we place  
ourselves: connected enough to hear  
and repeat all claims and verify some,  
yet prone to confirmation bias  
owing to algorithms which favour  
new expressions of that which we already  
hold to be true.

Myth moves in step with commerce.  
When merchant ships arrived  
once per season from the Orient  
they brought silk and saffron and stories  
of dog-sized ants which mined gold  
and took to the sky only to defend  
their treasure from camel-riding  
thieves. Now we receive the exotic  
via fibre optics as a stream of  
high frequency trades.

My love, I can't speak with authority  
on commodity futures, the wonders of the  
east  
and the behaviour of insects in Liverpool  
and Tunbridge Wells or any city

outside my directly  
observable reality,  
but it's flying ant day in  
my heart  
if nowhere else.



# PROPER ROASTS MENU

Available on Sundays pre-order advised

**Whitebait** £6.50  
Crunchy whitebait on a bed of rocket with homemade tartare sauce.

**Chicken Goujons** £7.00  
Crispy chicken goujons with maple-roast beef cubes on skewers with apple sauce.

**Pork Skewers (GF)** £7.00  
Maple-roast beef cubes on skewers with apple sauce.

**Soup (V)** £6.50  
Homemade roasted root vegetable soup served with rustic bread and butter.

**Cauliflower Bites (VE & GF)** £6.50  
Golden cauliflower bites coated in Moroccan-style quinoa breadcrumbs, paired with sweet chili sauce.

## PROPER ROASTS

Delicious locally sourced meats, crispy, fluffy roasts, smooth mash, tasty veg, plenty of gravy and a Yorkshire pudding - a proper Sunday roast!

### Nottinghamshire topside of beef

Indulge in our mouth-watering 21-day aged topside of beef, seasoned to perfection with a flavourful blended herb crust. £15.50

### Porcini Mushroom Wellington (Ve)

Satisfy your cravings with a scrumptious and heart-warming dish served with all the trimmings and vegan gravy. If you're not vegan, make sure to add a Yorkshire pudding. £15.50

### Slow-roasted pork belly

Prepare your taste buds for a mouthwatering experience! We're talking slow-roasted cider and apple pork belly, paired with savory stuffing and tangy apple sauce. £15.50

## SIDES TO SHARE

Tasty sides to share between friends - Serves 2-4

Cauliflower cheese £6.50

Mini Sausages £6.50

Bowl of roasties £4.50

## LITTLE PEOPLE

Mini meals for tiny tummies. Our kids dinners are small and priced accordingly. If you have big kids or if your days of being a child are long behind you, you could ask for a large kids dinner.

### MINI ROASTS

CHICKEN GOUJONS WITH CRISPY FRIES

COD BITES WITH CRISPY FRIES

CAULIFLOWER BITES WITH CRISPY FRIES (VE)

ADD BEANS OR PEAS

SMALL £5.00\*

LARGE £9.50

\*small kids portions are not available to grow ups

A smaller roast dinner for smaller appetites

Choose from

MINI CHICKEN ROAST

MINI BEEF ROAST

MINI PORK ROAST

£10 EACH



01664 822225 - see back page!



## BITS & BITES

### Whitebait £6.50

Enjoy a batch of lightly coated and fried whitebait. They are crispy, crunchy, and oh so moreish. With peppery rocket, red onion, and a homemade tartare sauce that's out of this world.

### Spiced Cauliflower Bites (VE & GF) £6.50

Experience the deliciousness of golden cauliflower bites coated in Moroccan-style quinoa breadcrumbs, paired with sweet chili sauce for a tantalizing treat.

### Little Pigs £6.50

Enjoy freshly baked, bite-sized sausages from our local butcher. Served with a zesty mayo dip that has a kick of English mustard.

### Vegetable Soup £6.50

Let your taste buds bask in the warm hug of a delicious homemade veggie soup, smuggled up with a crusty roll with a portion of butter.

### Chicken Goujons £7

Get your taste buds ready for a treat! These chicken goujons have a crispy crunch on the outside and juicy chicken breast on the inside. Served with fresh rocket and tangy BBQ sauce.

### The Stilton Ones £8.50

Everything that is good! Crispy fries, fried mushrooms, Long Clawson Stilton sauce, chives and crispy onion.

### Plough Poutine £8.50

With it's origins in Canada, poutine is too good to leave off our menu. Its Crispy fries, dressed in our signature truffle and parmesan, loaded with Long Clawson melting cheese and our house gravy.

## FANCY FRIES

### Herby Fries £4.50

Indulge in our crispy house fries, coated in a hush-hush medley of herbs.

### Truffle & Parmesan £5

Transform plain ol' house fries by adding heaps of parmesan and a drizzle of truffle oil. Trust us, it's a game changer!

### Garlic & Parmesan £5

Garlic, herbs, and cheese: a triple threat of deliciousness. Once you've savoured their awesomeness, you'll be committed for life!



01664 822225 - see back page!



## LOADED FRIES

### The Stilton Ones £8.50

Everything that is good! Crispy fries, fried mushrooms, Long Clawson Stilton sauce, chives and crispy onion.

### Plough Poutine £8.50

With it's origins in Canada, poutine is too good to leave off our menu. Its Crispy fries, dressed in our signature truffle and parmesan, loaded with Long Clawson melting cheese and our house gravy.

## FANCY FRIES

### Herby Fries £4.50

Indulge in our crispy house fries, coated in a hush-hush medley of herbs.

### Truffle & Parmesan £5

Transform plain ol' house fries by adding heaps of parmesan and a drizzle of truffle oil. Trust us, it's a game changer!

### Garlic & Parmesan £5

Garlic, herbs, and cheese: a triple threat of deliciousness. Once you've savoured their awesomeness, you'll be committed for life!

## PASTRY PIES

Available Weds, Thurs & Saturday



This savory dish features a buttery shortcrust base and flaky puff pastry top, served with a jug of delicious gravy and a choice of two sides.

| Side 1                        | Side 2                     |
|-------------------------------|----------------------------|
| Proper chips<br>Fries<br>Mash | Seasonal Veg<br>Mushy peas |

**Steak & Stilton**  
We're talking top-notch steak sourced right around the corner, slow-cooked in a mouthwatering gravy and topped off with a thick, decadent slice of Long Clawson Stilton. £15

**Lamb & Mint**  
Get ready for a flavour sensation! Tender chunks of Melton Mowbray Lamb swimming in a dark and rich gravy, all dolled up with a hint of mint sauce. £15

**Chicken & Mushroom**  
Prepare to indulge in a heavenly pie, oozing with juicy roasted chicken, earthy mushrooms, and savory leeks, all cuddled up in a luscious white wine and tarragon sauce. £14

**Minced Beef & Onion**  
This beef and onion pie is a delicious blend of simplicity and flavor! With minced beef, onions, and a classic beef gravy, it's a real treat for your taste buds. £12.50

**Homity pie (V)**  
Picture a golden, flaky crust hugging a scrumptious filling of potatoes, onions, leeks, spinach and cheese - simply divine! £12.50

## PROPER PIZZAS

**No. 1 Buffalo Margarita (V)**  
Pomodoro, Mozzarella, Buffalo Mozzarella, fresh basil £9.50

**No. 2 Aratro (V)**  
Garlic butter, Long Clawson stilton, roasted mushroom, onion jam. £10

**No. 3 Pepperoni**  
Pomodoro, mozzarella, pepperoni, caramelized red onion. £10

**No. 4 Ham & Mushroom**  
Pomodoro, mozzarella, cotto ham, roasted mushroom, truffle oil. £11

**No. 5 Prosciutto & Rocket**  
Pomodoro, mozzarella, prosciutto, rocket, parmesan. £11.50

**No. 6 Veggie One (V)**  
Pomodoro, mozzarella, roasted red pepper, mushroom, caramelized red onion, olives, oregano, rocket. £11.50

**No. 7 Meaty One**  
Pomodoro, mozzarella, pepperoni, cotto ham, roast chicken, caramelized red onion. £12.50

**No. 8 Spicy One**  
Pomodoro, mozzarella, pepperoni, chilli, jalapenos, caramelized red onions, chilli oil. £12.50

**No. 9 Dysoni**  
Pomodoro, mozzarella, roasted chicken, mushrooms, caramelized red onion, chilli, rocket, garlic oil. £11

## EXTRA TOPPINGS

Who are we to tell you how you should have your pizza or calzone? Tweak one of our Proper Pizzas or start with a cheese and tomato base and go to work with these great extras.

£1 Toppings - Caramelized Red onion, Onion Jam, Roasted mushrooms, Roasted red peppers, Olives, Pineapple, Jalapenos  
£2 Toppings - Buffalo mozzarella, Pepperoni, Cotto ham, Prosciutto, Roast chicken, Long Clawson Stilton.

## MASH TOP PIES

Indulge in high-quality ingredients, expertly cooked and topped with fluffy mashed potato. Comes with seasonal vegetables.

**Fisherman's Pie (GF)**  
Get hooked on this classic fish pie recipe, featuring a medley of cod, salmon, smoked haddock and prawns, in a dill and parsley sauce, capped off with a cheesy mash top. £15

**Shepherd's pie**  
Enjoy a classic shepherd's dinner with slow-cooked lamb mince, soft and sweet onions, savoury lamb gravy topped off with golden mashed potatoes, and melted cheese. Delicious! £13.50

**Lentil cottage pie (VE, GF)**  
Feast on our scrumptious lentil cottage pie: a hearty blend of lentils, veggies, and herbs, baked to perfection beneath a fluffy layer of mashed potatoes. £12.50

**Simple Chicken**  
Enjoy a mouth-watering southern-style chicken breast. The chicken is perfectly paired with fresh lettuce, tangy tomato, onion, and our house burger sauce. £12.50

**Spicy Lentil (Ve)**  
Indulge in a delectable lentil patty with crunchy cucumber, charred red pepper, tomato, red onion and a dollop of refreshing vegan mint mayo! £12.50

**EXTRAS**  
Crispy fries £3.50  
Proper chips £4.00  
Onion rings £3.50  
Stilton sauce £3.50  
Add melting cheese £2.00

## BURGERS

Gluten free buns available  
All burgers served on a shiny brioche bun with crispy fries and a tangy red slaw. Upgrade to Herby Fries for £1.00

**Plough Burger**  
Get ready to sink your teeth into two juicy double Sox patties, crispy bacon, Long Clawson Stilton, tomato, and red onion. £16.50

**Hunter's Chicken**  
2 succulent southern-style chicken breasts, crowned with crispy bacon, drizzled with BBQ sauce, and smothered with a generous helping of Long Clawson's melting cheese. £16.50

**Simple Cheeseburger**  
Enjoy a flavourful, hand pressed burger with a melty cheese blanket, tomato, red onion, and our house burger sauce. £12.50

**Simple Chicken**  
Enjoy a mouth-watering southern-style chicken breast. The chicken is perfectly paired with fresh lettuce, tangy tomato, onion, and a hint of mayonnaise. £12.50

**Spicy Lentil (Ve)**  
Indulge in a delectable lentil patty with crunchy cucumber, charred red pepper, tomato, red onion and a dollop of refreshing vegan mint mayo! £12.50



## AVAILABLE ON FRIDAYS FROM 4PM

**SIMPLE PIZZAS**  
No. 10 Cheese & Tomato (VE) £8  
No. 11 Pomodoro, Garlic & Oregano (VE) £9  
No. 12 Garlic & herb (VE) £8  
add cheese + £2.00  
Kids Cheese and Tomato (V) £5  
Kids Pepperoni £6.50

## CALZONE

Pizza and Pies Collide: The Folded Pizza Pie! Introducing our calzone - a delicious, savoury treat that will satisfy your cravings bite after bite.

**Meaty Calzone**  
Pomodoro, mozzarella, pepperoni, cotto ham, roast chicken, caramelized red onion. £14.50

**Aratro Calzone (V)**  
Garlic butter, Long Clawson stilton, roasted mushroom, onion jam. £12.00

**Veggie Calzone (V)**  
Pomodoro, mozzarella, roasted red pepper, mushroom, caramelized red onion, olives, oregano, rocket. £13.50

**NEWS FROM FARMINGTON. U.S.A.**

The Volunteers at the Fred Warner Mansion in Farmington U.S.A. continue to keep in regular contact with the Hickling community through the Hickling History Group.

Each year as Fred’s birthday arrives so does a gift from Farmington to Hickling. This year is no exception and a piece of artwork depicting Mackinac Island has been sent along with a history pamphlet about the island where Fred and his family would have spent many holidays.

It would be nice to be able to display some of the items sent to us and the History Group are open to any ideas. A few years ago, some drinking glasses were sent to us. Each engraved with a drawing of the Warner Mansion which was Fred’s home in America [ a far cry from the small cottage in which he was born in Hickling!!] These glasses were given to Kirsty and Chris at the Plough for display, so next time you go into the Plough, please look at them.

If anyone would like to learn more about Hickling’s famous son, there is a section about Fred Maltby Warner in the newly published booklet about Hickling Churchyard Below is a letter from Farmington:

~~~~~

**Greetings Hickling Friends,**

Many thanks for the lovely gifts as well as for the updates about activities in your community. So glad things are more like they were prior to Covid—it is like that here as well.

Enclosed is a piece of work by a local artist depicting the view of Mackinac Island, a scenic island in upper Michigan. It is very near the Mackinac Bridge, which is approximately 5 miles long and connects the upper and lower peninsulas of Michigan. Besides the stunning beauty of the area, Mackinac Island is unique in that no autos are allowed—the only modes of transportation on the island are horse-drawn carriages and bicycles. As the governors of Michigan all had homes to visit on Mackinac Island, the Warner family would have spent many relaxing holidays there. We have some wonderful news to share regarding Fred Warner’s home. While no live events are taking place at the Warner Mansion right now, there’s a good reason—we are about to start on a



large-sale renovation of the building! Last year, our State representatives were able to secure us a \$1 million in grant funding from the State of Michigan for repairs and upgrades to the Warner building and grounds. We had a photo-op on the steps of the Mansion, where State Senator Mary Cavanaugh and State Representative Jason Hoskins joined the Mayor, the City Council members and the Warnerettes Parasol Drill Team and presented us with a giant check.



Everyone was joking that “Now the Mayor needs to find a giant pen to sign the big check so we can cash it!”

It’s a stroke of unbelievably good fortune for the Warner Mansion. We’ve been doing repairs all along, but the list of work to be done is still long, as with any older building. We’ll be able to address all of those needs plus start on some additional upgrades—updating restrooms, space for catering or food preparation, and perhaps adding a temporary 3-seasons outdoor dining area in the backyard—so we’ll be able to introduce even more activities and events at the Mansion.

The City is putting together a plan to get this all underway. I think by Fred Warner’s birthday, we’ll know more about what this will look like. It’s all very exciting!

**Warmest wishes from your Farmington friends across the pond xxx**





Tree Felling  
Lopping,  
Pruning,  
Ground  
Clearance,  
Tree Surgery,  
Fencing,  
Planting,  
Logs,  
Wood  
Chipping,  
Hedges  
Maintained.

Fully Insured

Tel: 01664 822185



**Keith Wadkin & Son**  
Tree Specialist  
Hickling  
Melton Mowbray, Leics.  
LE14 3AQ

Established 1959

### Councillor's News for Nevile & Langar Ward

Hickling, Kinoulton, Upper Broughton, Colston Bassett, Hickling Pastures,  
Langar cum Barnstone.  
From Cllr Tina Combella

**Owthorpe & D-DAY** – Although, no longer in the Nevile & Langar Ward, Owthorpe is still linked historically and geographically to the Vale villages and recently there was a very poignant wartime memorial plaque unveiling by the Rushcliffe Mayor Debbie Mason in remembrance of two US paratroopers from the 82nd Airborne division - Jake Quisenberry and Thomas McGinley, who were both killed in the area during pre 'D-Day' parachute training. Training for the 82nd Airborne, was centred around Langar, however they overshot their drop zone and landed in Owthorpe, scrambling off to dig fox holes. This was brought to life by brothers, still living in Owthorpe, who remember playing in the fox holes which they called 'Yanky holes' There was also a traditional display of war time army vehicles and ammunition.



The ceremony took place in the historic little gem of a church St Margaret's and was attended by Lt Col Barbour, US Army RAF Molesworth and Major Pearson, US Army representing the US Embassy also Sir Andrew Pulford former Air Chief Marshal of the Airforce, the Deputy Lieutenant of Nottinghamshire and Rushcliffe Mayor Debbie Mason.

### The Farm Watch group

Open to all Rushcliffe Farmers, was set up following development of the Hickling Parish Plan way back in 2007 and has grown from its infancy into the very active Farmers group which now meets regular to discuss matters of farm security, environmental crime and machinery theft with Rushcliffe and cross border police forces, Crime Commissioner and Council portfolio holders. There is a dedicated Whats App group for farmers in Rushcliffe to communicate suspicious incidents to the farming community. This does not replace immediately reporting direct to the police on 101 to provide ongoing information. Whats App is proving an invaluable means of security communication within the farming community and I would urge those farmers not already connected to join the group. 07790846111



### Recent Rural Crime event for farmers



held at Oddhouse farm gave the further reassurance that we now have eyes on the ground and in the sky. We now have a fleet of Rural Crime vehicles able to go off road in the pursuit of environmental, farm machinery and fly tipping criminals. We also had a very comprehensive demonstration of the drone equipment and capabilities by a very

enthusiastic and competent Police Pilot which potentially gives the force more eyes and ears.

### Policing- update from Neighbourhood Police Inspector

The next few weeks will see a restructure of our Neighbourhood Policing Teams across the whole force area. This is part of a focus on boosting the NPT staffing numbers, reducing abstractions for other duties, and allowing officers to have more capacity to focus on the 3 pillars of Neighbourhood Policing; Community Engagement, Targeted Activity & Solving Problems. What this means for Rushcliffe is an increase of the staffing on Rushcliffe South. We'll welcome the arrival of Police Sgt Dave Hodson who joins us to lead that new 3rd team, and he has around 20 years of policing experience across Neighbourhood Policing, response, and partnership working.

The staffing, once all in post, will in essence double up the coverage on our Rushcliffe South area, providing double the amount of officer time for our rural communities and towns such as Bingham, Radcliffe, and East Leake. This is an exciting opportunity for us, and I hope in the coming months, you'll see increased visibility & activity in your local areas, as well as increasing our ability to offer a presence in the local night time economies.

Again, thank you for the support you offer our officers every day, and together, we'll keep Rushcliffe a safe place to live, work, and visit.

**Tim Cuthbert**  
Neighbourhood Policing Inspector, Rushcliffe

# HANWELL WINE ESTATE

www.hanwellwine.co.uk

Award-winning English wine from  
Nottinghamshire family vineyards est.1975



- Vineyard Tour and Wine Tasting
- Tour and tasting gift packages from £25
- Celebrate: birthday, anniversary, wedding, hen-do
- Traditional method vegan English Sparkling Wine
- Still White, Rosé, Cherry & Mead plus our new Red wine
- Craft Fair – Sunday 7<sup>th</sup> July 2024
- Open 11am-4pm Fri-Sun
  - Café bar now open
  - Wine shop open
  - DIY vineyard trail and wine tasting at your leisure, all year

Full details and bookings [www.hanwellwine.co.uk](http://www.hanwellwine.co.uk)

## Rural Antics Art, Craft and Skills Workshops



- |      |  |
|------|--|
| July | Smartphone photography, Bookbinding notebook workshop, Botanical inspired metal silver clay, Silver necklace making, charcoal still life workshop...                                       |
| Aug  | Pencil drawing for beginners, Macrame wall hanger, Stacking ring workshop, Silver bangle, Mixed media art, Cyanotype for beginners, Duck/obelisk/basket willow weaving, Pencil portrait... |
| Sept | Lino printing, Woodland acrylic painting, Wool weaving, Felt bowl making, Glass painting, Stained glass workshop...  |

Hanwell Wine Estate, Hickling Pastures, South Notts, LE14 3QG  
hello@hanwellwine.co.uk Tel: 01949 81393

## FRAUD – make sure you stay safe.

<https://www.rushcliffe.gov.uk/media/giyh0loo/fraud-advice-booklet.pdf>

The Crime Commissioner produced this very relevant booklet outlining the ways to be aware of and avoid fraud. It is available to download and I will be supplying hard copies to the Parish Councils.



## A606 SAFETY FIRST

Great news our united voices (residents and Councillors) were heard and County Highways completed the A606 resurfacing on May 11th. Frustratingly, owing to other works, this had been delayed - one by National Highways use of the A606 as a planned diversionary route for the A46 and two the approved application for a Welcome Break service station and drive through at Widmerpool island, which we are sad to say, will mean the newly resurfaced road will eventually be dug up again for restructuring of the traffic layout.

But It's SAFETY FIRST – Protection of the motoring and cycling public.

NCC Cllr. Neil Clarke portfolio holder for transport had already announced that work would commence on May 11th, overnight, to try and limit any more inconvenience on this section of road and sure enough, it took just a few hours to complete with minimal disruption.



As Councillors, we both understand your concerns – we too were driving this section of road everyday

## Newark & Nottinghamshire Show

The Nottinghamshire show was a wonderful showcase of all that's good in our County. Farming, communities, emergency services, volunteers even our own local wine and as you see the Fire service were engaging with young enthusiasts! There was really something for everyone. It was of course helped by beautiful weather.



If you have any concerns regarding planning, an application or development please contact me.  
Cllr. Tina Combella aiming to keep our villages vibrant  
Cllr.tcombella@rushcliffe.gov.uk

## Newark County Show (cont'd)



## Parish Council for Hickling & Hickling Pastures.

Summary of minutes meeting held on 26<sup>th</sup> March 2024 (draft).

Full Minutes are published on Parish Noticeboards and at <https://hickling-pc.gov.uk> .



### Raised by parishioners:

A query was raised by a parishioner about the need for planning permission for the installation of driveway mirrors. Several have recently appeared along Main Street in Hickling. **Clerk** to contact the planning authority and clarify the rules given they are situated within a conservation area.

Cllr Playle confirmed location of the new WI Black Poplar tree in the cemetery.

### Administrative:

Cllr Playle gave an update of the structure of the PC: All the Cllrs on the current PC are extremely time poor and no one individual wanted to take on the responsibility of Chair. Therefore they had previously adopted a rotating chair policy, however, Cllr Combellack took advice from RBC and NALC and suggested that this policy was illegal. The Cllrs did not want to compromise the PC so have gone back to a single elected chair. With Cllr Playle having the most availability to chair the meetings this position has defaulted to him, a parishioner wished to say that they appreciate what the PC are doing for the community and that Cllr Playle was doing a good job, this was seconded by all Cllrs present.

Email addresses for contacting the PC – it has been agreed that only the Clerk's email will be published in the Hickling Standard and the advice to parishioners is to contact the PC through the Clerk initially. This will stop individual Cllrs being overwhelmed with emails and the Clerk can direct individual enquiries to the relevant portfolios.

### Planning:

Ref: 23/02275/FUL; Rob Brown, Erection of 9 new dwellings and extension of existing bungalow and associated landscaping and highway works, Haulage contractors Bridegate Lane Hickling Pastures LE14 3QA.

#### **APPLICATION REFUSED**

Ref: 23/02192/FUL; Mr Paul Sharp, Demolition of detached garage construct single stored side/rear flat roof extension, associated raised rear patio area and side boundary fence, 23 Harles Acres Hickling LE14 3AF.

#### **APPLICATION GRANTED**

Permission granted to reduce height of Leylandii conifer by half to rear of Home Farm.

Permission granted to reduce height of 2 Leylandii conifer and a Hawthorn tree by 2m at 10 Harles Acres

### Finance & Assets:

Annual audit of accounts – David Dixon at Dixon accounting has been

appointed



### Environment:

Wildflower verge – Cllr Playle noted that the verge that has been seeded for wildflowers has been covered by the spoil from the recent ditch clearing. Motion to reseed proposed – **AGREED** by all.

Church yard lime tree – Cllr Playle updated on the recent removal of a diseased lime tree at St Luke’s church, Hickling. This tree was due to be poisoned however, following discussions with the tree surgeons it has been agreed to allow a new tree to grow from the roots of the old tree.

Flood warden update - Cllr Playle and Cllr Combellack have had discussions with several members of the community about being involved with emergency response to flooding it is felt that this requires someone from the community to coordinate. **Clerk** to contact volunteers and see if they need help organizing training etc. **Clerk** also to contact Lowdham PC to discuss how they support their flood response volunteers.

Cllr Playle also wished to discuss the need for a longer-term project to address flood prevention using natural defences and stop “knee jerk” reactions such as de-silting of brooks. Some landowners have been approached to discuss this and have so far given positive responses. It was noted that the scheme is beneficial for both community and landowner as it would be a way to potentially get an income from land that is not able to grow crops due to it already being susceptible to flooding. PC suggest that it would be good to get a study done to be able to present to landowners and allow the planning of a larger project within the village e.g to establish nature areas with walks through them instead of just walking through muddy fields.

### Highways & Street Furniture:

Bridegate Lane Cones – Cllr Prosser noted that the roadside cones as you enter the village from Bridegate lane are often very dirty and therefore less effective.

A606 road surface – Clerk contacted Cllrs Cottee, Combellack and Cllr Clarke to find out if the road surface could be resurfaced as a matter of priority. Response from Cllr Clarke suggested that they are waiting for clarification on when the RSA works will commence as it is felt that it would be a waste of public money to resurface the road for it to be dug up again. The PC feel that this is an unsatisfactory response since the road surface is deteriorating rapidly poses and ever increasing threat to causing a serious accident. **Clerk** to write back re-iterating that the PC feel that this needs addressing as a matter of urgency. Letter also to be sent to MP Ruth Edwards highlighting the issue.

### Community Engagement:

Litterpick – Cllr Playle noted that the community litterpick was not as well supported as in previous years. It was suggested that perhaps it needs coordinating by a member of the community in future and later in the year when it is warmer and could be made more of a social event



### Ward Member report:

Cllr Combellack has been approached by people interested in becoming flood wardens and undergoing NCC flood Warden training which will involve help and advice with road closures. Rushcliffe have money available to help with storage of flood and road closure signs if locations can be found. PC would need to put in a request to RBC. money for flood alleviation schemes is also available from NCC.

Information was given relating to the upcoming county authority mayoral and police and crime commissioner elections to take place on 2nd May 2024.

Cllr Playle requested an update on the traffic calming surveys – Cllr Combellack stated that NCC highways team have been notified that there is concern with traffic in the area of Main Street between Long Clawson Lane and Bridegate Lane and a response is awaited.

### Correspondence:

Lengthman’s Hut signage – Cllr Prosser gave an update: following email communication between the local history group and the landowners where the sign is to be positioned this is now moving forward but they will let us know in due course when they are ready for the funds held by the PC for the sign.

Community notices – Clerk has been approached by a parishioner about the selective removal of posters from the bus stop on Main Street, Hickling. Cllr Combellack advised that the bus stop is not owned by the parish and therefore nothing can be done.

Flooding and drain clearing near Pudding lane – Pictures received of lorry clearing the drains at the South end of Main Street on 4/3/24. Also pictures of the drain re-covered in mud following milk tanker reversing over it when cars are parked opposite the lane.

Defibrillators – Current costs of replacement defibrillators received so that PC can start planning to fund the replacement of the three community defibrillators in the next few years.

**Finance and Account balances:** see full Minutes on Parish Noticeboards and online.

**Date of next meetings (tbc):** Proposed dates of 14<sup>th</sup> May and 4<sup>th</sup> June

## PARISH COUNCIL WEBSITE

The Hickling & Hickling Pastures village website can be found at:  
<https://hickling-pc.gov.uk>

We hope that the website will gradually grow over time and that it will be easier for residents to catch up with Parish Council business and to contact Parish Councillors. The website also has sections for village news and for village groups—please keep visiting the website to see what is going on in your village!



## YOUR PARISH COUNCIL

The Parish Council is the lowest tier of local government and is made up of representatives living within the local community who have an interest in community matters and who make decisions on behalf of the Parish.

**Your Parish Clerk can be contacted: by email: [clerk@hickling-pc.gov.uk](mailto:clerk@hickling-pc.gov.uk)**

The Parish Council is here to help; however, many issues encountered in the Parish, do not fall under the jurisdiction of the Parish Council and you should contact the relevant authority in the first instance to assist you.

**PLEASE CONTACT NOTTS COUNTY COUNCIL:**  
[www.nottinghamshire.gov.uk](http://www.nottinghamshire.gov.uk) or call 0300 500 8080 - Monday to Friday 8am to 6pm for issues relating to:

Roads & pavements including obstructions and potholes/roadside verges/road gullies or drains/streetlight faults/trees on public land/bus services.

**PLEASE CONTACT RUSHCLIFFE BOROUGH COUNCIL:** [www.rushcliffe.gov.uk](http://www.rushcliffe.gov.uk) or call 0115 9819911 for issues relating to:

Planning  
 Waste – including fly-tipping  
 Electoral matters.  
 Council Tax

If you have an issue and you are unsure of who can help, or a previously reported issue remains unresolved then contact the Parish Clerk; [hicklingparishclerk@gmail.com](mailto:hicklingparishclerk@gmail.com)

### If you wish to comment on a planning application:

**You can comment online** by searching for 'Rushcliffe Planning' - go to 'simple search' type in 'Hickling' and scroll to find the application.

**Or you can write to:**  
 Planning & Development  
 Rushcliffe Borough Council  
 Rushcliffe Arena  
 Rugby Road  
 West Bridgford  
 NOTTINGHAM  
 NG2 7YG

Always remember to quote the planning reference.

**Please copy your comments to the Parish Council and Borough Councillor, Tina Combella so that we can take your views into account in our decisions.**

## Diary

31st May	Mikron Theatre - Common Ground	Plough Inn 7pm
4th June	Parish Council	VH 7pm
4th June	WI—Darts night	7.30pm
11th June	D-Day event, Victoria Embankment	6pm
20th June	WI—Brinvale Wildbird Feed Company (trip)	
22nd June	Jumble Sale	VH 2pm
27th June	WI—Trip to Flora Media (daytime)	
28th June	St. Luke's Church—Night at the Musicals	7.30pm
27th-28th June	Armed Forces Weekend, Wollaton Park	
2nd July	WI—Darts night	7.30pm
7th July	Dove Cottage—Pawsome Family Day	11am-4pm
11th July	WI—10am—dog-racing at Colwick	
18th July	WI—Summer Garden Party	
6th Aug	WI—Darts night	7.30pm
11th August:	WI 50s & 60s Festival at Crich Tramway Museum	
14th & 15th Sept	Scarecrows Festival	
27th Sept:	WI Day Trip to Stamford	
4th Oct	St. Luke's Church—History Talk by Peter Liddle	

**Every Thursday at 10.30am:** Coffee Morning in Church (please check venue during winter months)  
**Beaver Scouts** 6-8 years, Tuesday 6.15-7.15pm; **Cub Scouts** 8-10.5 years, Monday 6.00-7.30pm;  
**Scouts** 10.5-14 years, Monday 7.30-9.00pm; all at Kinoulton Village Hall  
**Explorer Scouts** 14-18 years, Tuesday 7.30-9.00pm; Keyworth Scout Hut  
**Contact** for ALL sections: Susanne Youngson 0788 413 6890 [gskinoulton@gmail.com](mailto:gskinoulton@gmail.com)

~~~~~

### Would you like to support the Hickling Standard with sponsorship?

Printing costs are an ongoing pressure for us but we are committed to delivering a free copy of the newsletter to every household in Hickling & Hickling Pastures.

We estimate that the costs are approx. £5 a year per household— great value for money!! Please email [a.terry125@btinternet.com](mailto:a.terry125@btinternet.com) if you are interested in making a small (or large!) contribution to our costs; payments can be made by bank transfer & we can include your name in a list of our supporters (or you can remain anonymous, if you prefer).

### & thank you to those of you who already support us;

Hickling Parish Council    Scarecrows Committee    Samworth Foundation  
 Peter and Philippa Jacks.    Adam and Donna Taylor    Pauline Chell  
 Mr & Mrs A Chambers    Anonymous  
 Andy & Mairi Chapman    Lisa & Paul Mills    & all of our advertisers.

~~~~~

# Village Directory:

<b>150 Club</b>	Philippa Jacks 822622	<b>Kinoulton School PTFA</b>	Sarah Parris 01949 823925
<b>Beavers</b>	Susanne Youngson 07884 136890	<b>Neighbourhood Watch</b>	Tracey Prosser tjprosser67@gmail.com
<b>Bellringers</b>	Lynn Irving 07388 348341 lynn.irving74@gmail.com	<b>Nottinghamshire Police</b>	Control Room; non-emergency number 101 Parish Council: Clerk—Cate Stokes e.mail: clerk@hickling-pc.gov.uk
<b>British Legion</b>	Colin Henson 01949 81453	<b>Parochial Church Council</b>	Priest in Charge Revd Paul Massey Email: 1revdpaul@gmail.com Tel: 01159 892223
<b>Councillors</b>	John Cottee (County) cljr.john.cottee@nottscc.gov.uk	<b>Churchwarden</b>	Churhwarden Alex Thomas 823420 Secretary
<b>Cubs</b>	Tina Combella@rushcliffe.gov.uk	<b>Scarecrow Committee</b>	Karen Buckley (Chair) 07729 768366 Sally Jenkins (Secretary) 07971 520711
<b>Film Society</b>	Susanne Youngson 07884 136890	<b>Scouts</b>	Susanne Youngson 07884 136890
<b>Gardening Club</b>	Tim McEwen 822834 Mr B. Baxter 01949 81374 Mrs B. Grundy 01949 81442 Liz Vear 822562 or 07805 407229	<b>Table Tennis:</b>	Alison 01664 822761 & Dave 01664 820262 Elizabeth Evans 01949 81501 Barbara McEwen (Chair) 822834 Tim McEwen (sec.) 822834
<b>Good Neighbours</b>	Alison Popplewell 01949 81604	<b>Vale Beaders</b>	John Robinson (treas.) 822762 Phillipa Jacks (bookings) 823622 Lynn Irving 07388 348341 lynn.irving74@gmail.com
<b>Scheme</b>	Nick 07950 558608	<b>Village Hall</b>	Lynne Spencer (Secr.) 01159431008 Carol Beadle (Treas) 01664 822195 Pauline Chell (Trips) 01664 822835
<b>Guides</b>	see previous page	<b>Village Choir</b>	
<b>Hickling Pre-School</b>	Carol Beadle 822195	<b>Women's Institute</b>	
<b>Hickling Standard</b>	Pauline Chell (fundraising) 822835		
<b>History Group</b>	Jane Fraser 822845 Gill Bloor 822682 Mr Simon Paramore (head) 01949 81203 office@kinoulton.notts.sch.uk		
<b>Kinoulton School</b>			

## Hickling Village Newsletter - Committee

Chair; Tim McEwen - tel. 822834 or tmcewen@globalnet.co.uk

Treasurer/Advertising; Andrew Terry

tel. 822088 or a.terry125@btinternet.com

Jane Fraser - tel. 822845 or frasermjlk@outlook.com

Barbara McEwen - tel. 822834 or barbara.mcewen01@gmail.com

Please get in touch with any of us if you have any comments or suggestions; we would welcome any contributions for future issues - articles, opinions, reports, recipes, poems, brain-teasers - whatever you would like to see in print!

### 2024 Copy Dates;

Aug/Sept 15/7/24

Oct/Nov 15/9/24

Copy must be received before these dates to guarantee its appearance. Please note that the committee reserve the right to edit or omit any material submitted. Opinions expressed in published articles remain the responsibility of the author. Articles may be published anonymously but the committee does need to have details of authorship before publication. For details of our privacy policy, please ask any member of the committee.

**COPY IN ANY FORM IS ALWAYS GRATEFULLY RECEIVED**

e-mail address - frasermjlk@outlook.com

**Advertising Rates** (one advert for one year - 6 issues.)

Front inside cover - £65

Back cover - £80

Quarter page - £30

Half page - £45

Full page - £60

(enclose payment with copy for the advert and give to a committee member before the copy date.)

Charity, Village Events and Personal (wanted/for sale) adverts are FREE.

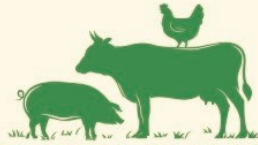
**We are very grateful to everyone who supports the village through placing adverts in the newsletter - you make all the difference!**

### Hickling Standard - online edition

The Hickling Standard is also available as a pdf at: [www.hicklingnottslocalhistory.com/hickling-standard/](http://www.hicklingnottslocalhistory.com/hickling-standard/) and will shortly be available on the new Parish Council website, too.

XXXXXXXXXXXXXXXXXXXX

The Hickling Standard is printed by Adlards, The Old School, The Green, Ruddington: 0115 921 4863



THE STACKYARD  
FARM SHOP

## FARM SHOP

Home Reared Beef

Meat | Eggs

Dairy | Fruit

Vegetables

Daily Newspapers

Gifts

**Opening Times:** Tues - Sat | Sunday  
9am - 4pm | 9am - 1pm

Grove Farm, Hickling Lane, Kinoulton, NG12 3ED

